

Σύντομη περιγραφή:

T.:

W.:



INNVESTIO

Business Unit:

ThermoFlexX

ThermoFlexX 80



The ThermoFlexX 80 with its maximum plate size of 1270x2030mm (50x80") is the perfect fit for high volume plate makers.

It's an excellent choice for ambitious printers and trade shops to make plates in the shortest time possible at the highest quality.

ThermoFlexX 80 is an ideal size to handle larger size plates or making large amounts of jobs together, reducing material waste to a minimum.

ThermoFlexX 80 is the ultimate flexo plate imager combining superior quality, handling and productivity.



High Quality Imaging

The new generation optical system offers superior quality thanks to a unique design using leading edge technology.

The fiber laser represents today's best technology for digital imaging, offering superior quality. The robustly designed ThermoFlexX is made using heavy duty industrial components, making high speeds possible without fluctuation and vibrations. This provides the most accurate and consistent imaging quality available today.

Productivity

The new imaging system is not only built for optimum quality, but also to combine this quality with superior speeds. Productivity up to 6m²/h can be achieved at standard quality (2540dpi). This can be doubled up to 12m², thanks to our Dual Head Imaging concept. This concept also offers a certain level of redundancy.

Ease of Use

The ThermoFlexX 80 can automatically load and unload plates with one touch of a button. Manual plate handling is one of the main causes of plate damage. With this in mind we designed the FlexTray. This mobile table, which can be adjusted in height and tilted, facilitates very easy plate handling and transport.

Open

ThermoFlexX imagers excel in their choice of resolution. Any of the industry standards can be used. ThermoFlexX imagers can be integrated with any workflow or RIP that can produce 1-bit TIFF file format. Closed file formats such as LEN-files can be converted to 1-bit TIFF. ThermoFlexX can image all digital plates, any brand, solvent, water washable or thermal processing, and is compatible with all plate making equipment.

Low Plate Waste

Clever technical innovation, such as the unique vacuum slider, demonstrate our understanding that users need to save cost and time.

No more taping partial plates!

ThermoFlexX

Motion Accuracy

The robust design is based on a modular platform with a small footprint. The imaging system is driven by linear motors with ultimate accuracy. The direct drum drive guarantees a continuous speed without fluctuations.

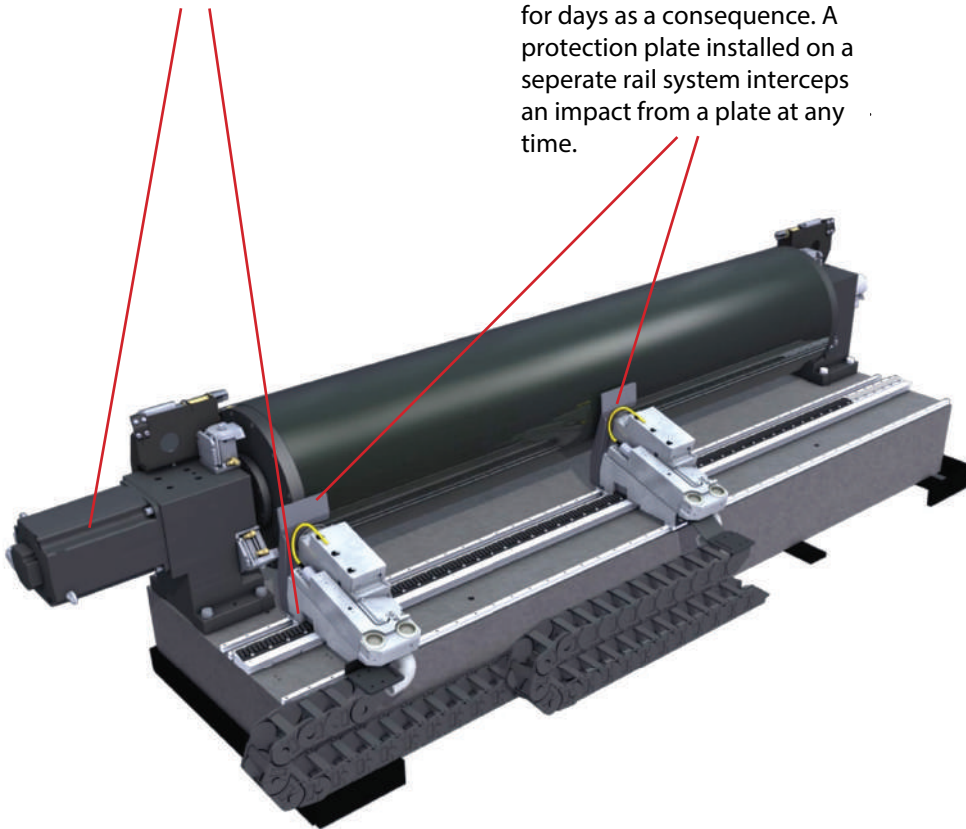
Laser Protection Plate

A plate flying off because of loading errors can happen on any CTP. These accidents can seriously damage the imaging unit leaving it out of operation for days as a consequence. A protection plate installed on a separate rail system intercepts an impact from a plate at any time.



Imaging Software

The ThermoFlexX imager is controlled using a 360° rotating display. This makes the machine accessible from any side. The intuitive interface shows the job list with all parameters and a preview of the currently imaging plate. The imaging process on the plate preview screen is clearly visible all around the plate room.



Dual Head

Thanks to our option Dual Head Imaging concept the speed can be doubled, up to 12m²/h at 2540 dpi. This concept also offers a certain level of redundancy.

Auto Loading

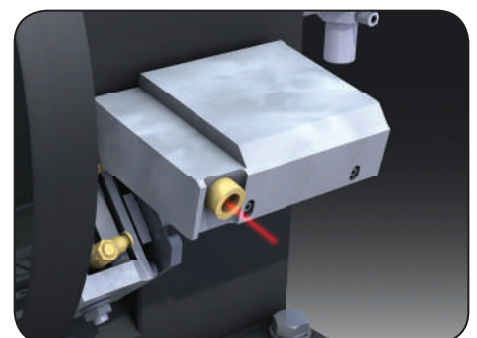
The ThermoFlexX 80 can automatically load and unload plates with one touch of a button. An innovative guidance system makes sure that even thick plates, up to 6,35 mm (0.25"), can be seamlessly mounted on the drum, all automatically.

Flextray

Manual plate handling is one of the main causes of plate damage. With this in mind we designed the Flextray. This mobile table, which can be adjusted in height and tilted, facilitates very easy plate handling and transport.

Automatic Calibration

The new generation optical system offers superior quality thanks to a unique design using leading edge technology. Our standard auto-calibration system guarantees consistency and high quality imaging.



ThermoFlexX

3 Component Imaging Head

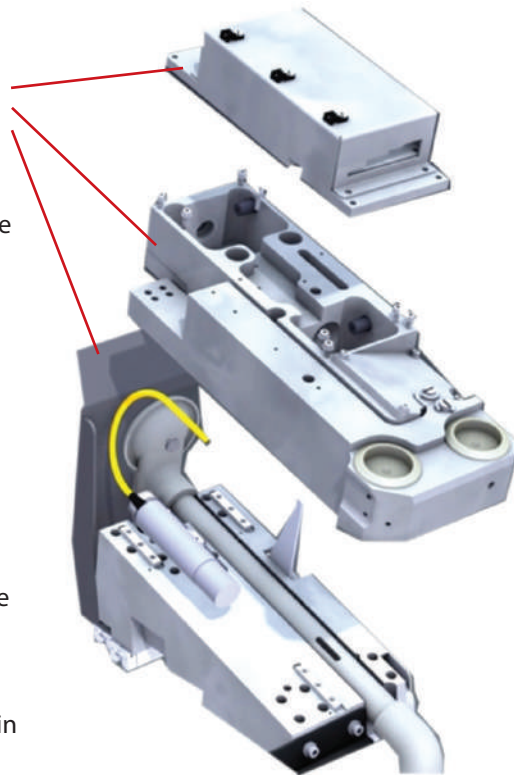
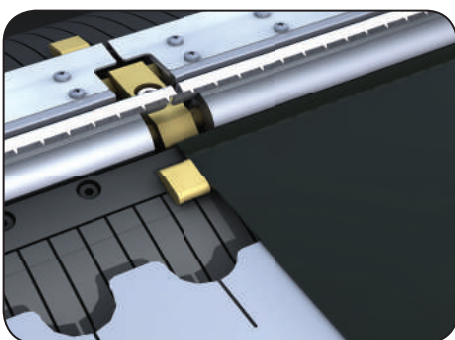
The imaging system consists of 3 independent modules: motor, optics and laser. This flexible design allows straightforward replacement of any of the modules. It is even possible to perform optical fine tuning remotely. This makes service interventions simple and hardware upgrades effortless and straightforward.

Automatic Resolution Switching

The optical system is based on multiple lenses. We use the most suitable lens for each resolution without compromise in quality. Changing resolution is performed automatically in the background. The possibility of combining jobs with different resolutions on one plate saves time and avoids imposition mistakes.

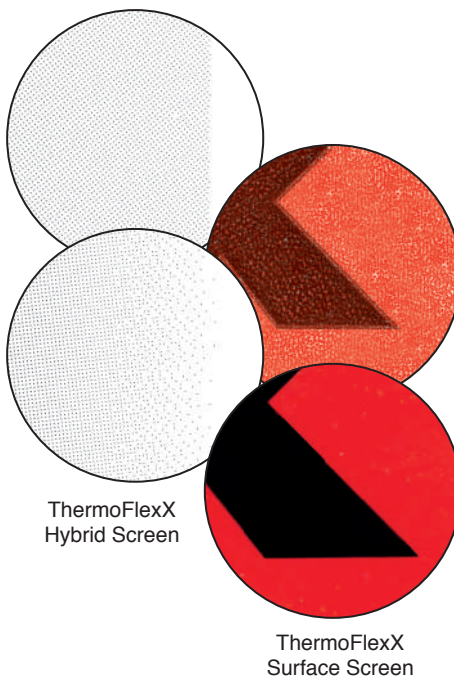
Automatic Vacuum Slider

Optimum plate handling and manipulation avoids accidental damage. The automatic vacuum slider, a unique feature on ThermoFlexX imagers, offers efficient operation for partial plates. By moving the slider to the edge of the plate the vacuum is concentrated beneath the plate, which eliminates the need for taping and foil covering but still allows full speed imaging.



Innovative Screening

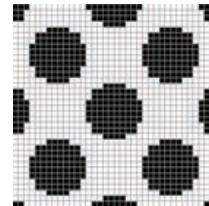
New ThermoFlexX screening technology offers superb highlights with a smooth transition to 0% tint value, while solids and line-work retain excellent detail.



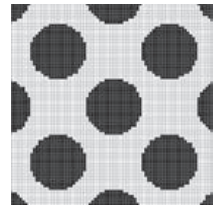
High Resolution

With 5080dpi resolution, we push quality standards to a higher level.

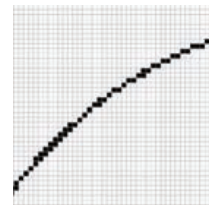
- smaller screen dots & finer details
- sharper text and line-work
- full image contrast
- greater production stability through platemaking and printing



2540



5080



Multi Resolution

ThermoFlexX supports all 1-bit TIFF format from any RIP at all standard resolutions 2000 - 2400 - 2540 - 4000 - 4800 - 5080 dpi. Closed file formats such as LEN files can be converted to seamlessly 1-bit TIFF format. In the Multiplate software, TIFF's with different resolution can be combined on one plate.

MultiPlate

MultiPlate has a fully intuitive interface providing amazing ease of use. 1-bit TIFF's are arranged automatically or manually and jobs of different resolutions can be combined. The status of different jobs is clearly presented. With the search and filter tool you can easily find files, even if they are stored in an archive.



ThermoFlexX

SPECIFICATIONS THERMOFLEXX 80

	80 E	80 S	80 D
Laser type	Fiber laser 1064nm		
Laser Power	50 W	100 W	2 x 100 W

Standard Resolution*	2400	2400	2400
	2540	2540	2540
High resolution*	4000	4000	4000
	4800	4800	4800
	5080	5080	5080

*By default one resolution (2400 or 2540dpi) comes with the imager. Additional resolutions are optional.

Productivity 2400 dpi **	3	6	12
Productivity 5080dpi **	1,5	3	6

** Depending on plate type and quality requirements. Thicker plates are imaged 60% of the mentioned productivity.

Image Quality	at 2540 dpi : up to 175lpi / at 5080 dpi : up to 250lpi		
---------------	---	--	--

Hybrid Drum option	No
Customised register pins	
Customised magnetic zones	

Loading Table	FlexTray
---------------	----------

Clamping system	Automatic
-----------------	-----------

Resolution Change	Automatic
-------------------	-----------

Focus setting	Auto focus
---------------	------------

Plate loading	Manual / Automatic
---------------	--------------------

Partial Plate handling	Automatic Vacuum Slider
------------------------	-------------------------

Maximum Plate size (drum dimensions)	1270 x 2032 mm or 50" x 80" (width: 2032 mm / circumference: 1270 mm)
---	--

Plate thickness	0.73 to 6.35 mm 0.029 to 0.25"
-----------------	-----------------------------------

Mountable plate materials	Flexo plates and letterpress plates on polyester base
	Dry Films 0,2mm
	Digital Screens Gallus Screeny
	Metal back plates Not possible

Applications	Corrugated Packaging
	Folding Carton
	Flexible Packaging

Top & Bottom clamp space	15 mm / 0,6"
--------------------------	--------------

Machine Dimensions	Width: 3550mm / 139,8"
	Depth: 1223mm / 48,2"
	Height: 1200mm / 47,3"
Required Floor space	5500 x 5500 mm 216" x 216"

Weight	3700 kg / 8 157 lb
--------	--------------------

Compressed Air	Min. 6 bar - free of oil/condensation Compressor not included - 0,5" connection
----------------	--

Electrical connection	Voltage 3x400V (+/-5%), N, PE
	Frequency: 50 Hz -60 Hz
	Fuse: 20A
	Power consumption 5,6 kVA

Exhaust & Filter system	External exhaust carbon filter system with carbon filter
-------------------------	--

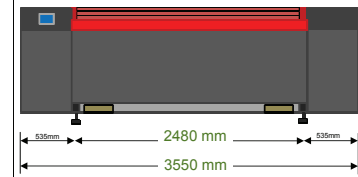
Vacuum system	External vacuum system provided
---------------	---------------------------------

Operating conditions	Humidity max 70%
	Temperature 15-26° / 59-79 F / (+/-2%)

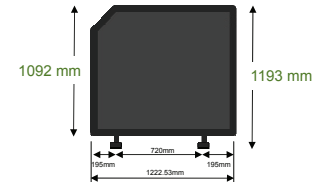
Multiplate Software Platform Specification	Windows 10 Professional Server 64 bit 3 Ghz Quad Core (4 cores with Hyperthreading) 32 GB RAM DVD ROM / Minimum 1 USB port for Dongle Dual 100/1000 Network Interface 1 TB hard disk
--	---

□ standard ■ optional

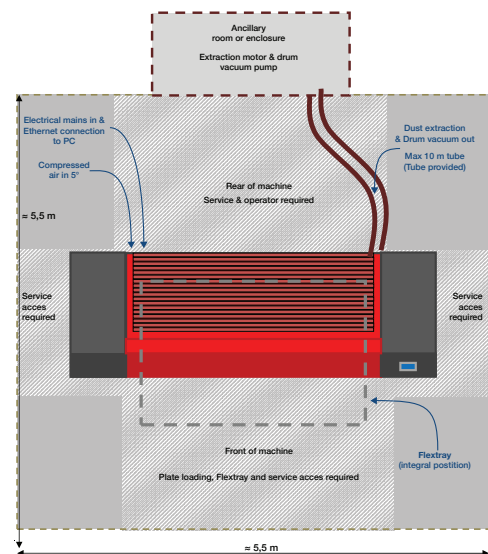
Front view



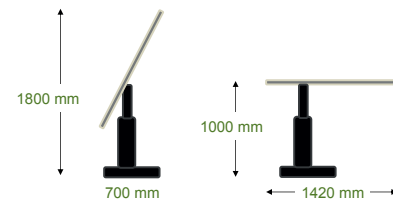
Side view



Floor plan



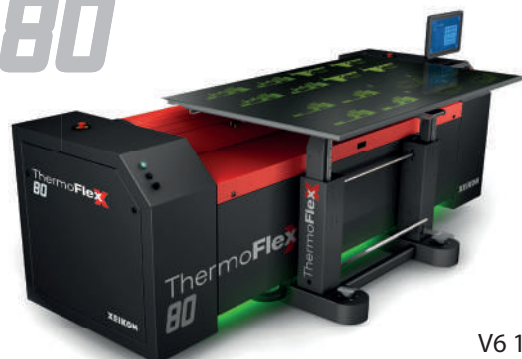
Flextray



The above mentioned specifications are valid from 04-01-2016 and overrule all previous specs. There is no legal commitment towards the specifications, due to ongoing changes of the product.

ThermoFlexX

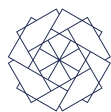
80



V6 10-09-2019

www.thermoflexx.com
info@thermoflexx.com

XEIKON



INNVESTIO

INNVESTIO

Θέση Πάτημα, ΒΙ.ΠΕ. Καλυβίων
Καλύβια Θορικού, 190 10 (Τ.Θ. 101)

T.: 210 220 6100, 22990 61000

E.: hello@innvestio.gr

W.: www.innvestio.gr - www.innvestio.bg

